

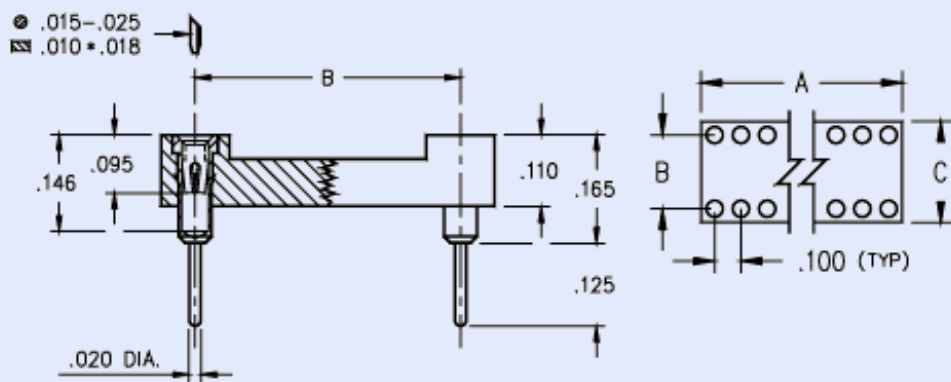


Home > Product Search > **Product Details**

**PRODUCT DETAILS**

[PDF CATALOG PAGE](#) | [EMAIL TECH SERVICES](#) | [BACK TO SEARCH RESULTS](#) | [NEW SEARCH](#)

**Product Number: 110-XX-XXX-41-001000**



**DIP Socket**  
**Solder Tail**  
**Standard Solder Tail**  
**Standard Temperature**  
**Open Frame**  
**Through Hole**  
**PBT\***

Want to modify this part? Email Technical Services with your application specific requirement.

**Inner Contact:**

30=[Standard 4 Finger BeCu , rated at 3A](#)

Plating Code	Shell Plating	Inner Contact Plating
13	10 μ" Gold over 100 μ" Nickel	30 μ" Gold over 50 μ" Nickel
*41	200 μ" Tin (matte finish) over 100 μ" Nickel	10 μ" Gold over 50 μ" Nickel
*43	200 μ" Tin (matte finish) over 100 μ" Nickel	30 μ" Gold over 50 μ" Nickel
*44	200 μ" Tin (matte finish) over 100 μ" Nickel	100 μ" Tin (matte finish) over 50 μ" Nickel
91	200 μ" Tin/Lead(93/7) over 100 μ" Nickel	10 μ" Gold over 50 μ" Nickel
93	200 μ" Tin/Lead(93/7) over 100 μ" Nickel	30 μ" Gold over 50 μ" Nickel
99	200 μ" Tin/Lead(93/7) over 100 μ" Nickel	100 μ" Tin/Lead(93/7) over 50 μ" Nickel

\*Parts with tin plating(41,43,44) will be supplied with high temperature insulators

**Narrow your search**

How many Pin Positions do you require?

Plating Options:

20	1.0	0.3	0.4	-	-	20	-	-	-	110-93-320-41-001000	<a href="#">Add</a>	<a href="#">Check Stock and Place Order</a>	NO
20	1.0	0.3	0.4	-	-	20	-	-	-	110-99-320-41-001000	<a href="#">Add</a>	<a href="#">Check Stock and Place Order</a>	NO
22	1.1	0.3	0.4	-	-	18	-	-	-	110-13-322-41-001000	<a href="#">Add</a>	<a href="#">Check Stock and Place Order</a>	NO
22	1.1	0.3	0.4	-	-	18	-	-	-	110-41-322-41-001000	<a href="#">Add</a>	<a href="#">Check Stock and Place Order</a>	
22	1.1	0.3	0.4	-	-	18	-	-	-	110-43-322-41-001000	<a href="#">Add</a>	<a href="#">Check Stock and Place Order</a>	
22	1.1	0.3	0.4	-	-	18	-	-	-	110-44-322-41-001000	<a href="#">Add</a>	<a href="#">Check Stock and Place Order</a>	
22	1.1	0.3	0.4	-	-	18	-	-	-	110-91-322-41-001000	<a href="#">Add</a>	<a href="#">Check Stock and Place Order</a>	NO
22	1.1	0.3	0.4	-	-	18	-	-	-	110-93-322-41-001000	<a href="#">Add</a>	<a href="#">Check Stock and Place Order</a>	NO
22	1.1	0.3	0.4	-	-	18	-	-	-	110-99-322-41-001000	<a href="#">Add</a>	<a href="#">Check Stock and Place Order</a>	NO
24	1.2	0.3	0.4	-	-	16	-	-	-	110-13-324-41-001000	<a href="#">Add</a>	<a href="#">Check Stock and Place Order</a>	NO
24	1.2	0.3	0.4	-	-	16	-	-	-	110-41-324-41-001000	<a href="#">Add</a>	<a href="#">Check Stock and Place Order</a>	
24	1.2	0.3	0.4	-	-	16	-	-	-	110-43-324-41-001000	<a href="#">Add</a>	<a href="#">Check Stock and Place Order</a>	
24	1.2	0.3	0.4	-	-	16	-	-	-	110-44-324-41-001000	<a href="#">Add</a>	<a href="#">Check Stock and Place Order</a>	
24	1.2	0.3	0.4	-	-	16	-	-	-	110-91-324-41-001000	<a href="#">Add</a>	<a href="#">Check Stock and Place Order</a>	NO
24	1.2	0.3	0.4	-	-	16	-	-	-	110-93-324-41-001000	<a href="#">Add</a>	<a href="#">Check Stock and Place Order</a>	NO
24	1.2	0.3	0.4	-	-	16	-	-	-	110-99-324-41-001000	<a href="#">Add</a>	<a href="#">Check Stock and Place Order</a>	NO
28	1.4	0.3	0.4	-	-	14	-	-	-	110-13-328-41-001000	<a href="#">Add</a>	<a href="#">Check Stock and Place Order</a>	NO
28	1.4	0.3	0.4	-	-	14	-	-	-	110-41-328-41-001000	<a href="#">Add</a>	<a href="#">Check Stock and Place Order</a>	
28	1.4	0.3	0.4	-	-	14	-	-	-	110-43-328-41-001000	<a href="#">Add</a>	<a href="#">Check Stock and Place Order</a>	
28	1.4	0.3	0.4	-	-	14	-	-	-	110-44-328-41-001000	<a href="#">Add</a>	<a href="#">Check Stock and Place Order</a>	
28	1.4	0.3	0.4	-	-	14	-	-	-	110-91-328-41-001000	<a href="#">Add</a>	<a href="#">Check Stock and Place Order</a>	NO